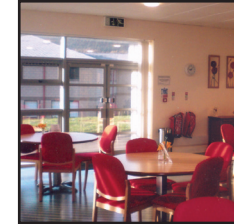


# Joint Day Care Unit



## Facilities

- The Joint Day Care Unit is a multipurpose centre for adults.
- It is situated in the Abertillery Sports Centre and is easily accessible from Alma Street.
- The centre has excellent facilities and is well furnished with:
  - a large dining area
  - a lounge
  - a craft room
  - a private room
  - bathrooms and toilets, well equipped to meet service users needs
  - a small kitchen, which serves refreshments throughout the day



## Transport

- Service Users who attend the day centre will be eligible to apply for a place on transport, subject to availability and assessment.
- The transport team uses specialised transport, which can accommodate wheelchairs and are fitted with tail lifts.
- All drivers and escorts employed participate in an induction programme and receive instruction in transport safety systems.

**Social Services**

## Staff

- The staff team at the Joint Day Care Unit consists of a Day Service Manager, Team Leader (including a Clerical Officer), Community Support Workers and Domestic Assistants.
- All staff at the Joint Day Care Unit have either gained or will be working towards NVQ at the level appropriate to their post.
- Staff are also given further training as appropriate to develop their skills and knowledge to enable them to have a greater understanding of the wide range of disabilities of Service Users who attend the centre.
- Staff are regularly supervised by their line manager and attend regular team meetings.
- There is a small enthusiastic staff team at the Joint Day Care Unit that is committed to providing a high quality reliable service.

## Meals

- The centre offers a light breakfast of tea or coffee and toast on arrival at a small charge.
- Choices of beverages are on offer throughout the day.
- The centre will provide a lunchtime meal. There is a choice of menu and specialist diets are catered for.



## Services

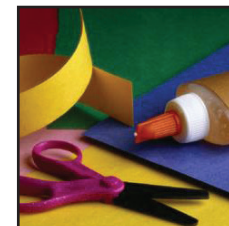
- The day centre is able to accommodate up to 30 Service Users, with the exception of a Monday, which is dedicated to the younger physically disabled.
- The day centre is open between the hours of 9.30am – 3.30pm (Monday – Thursday) and 9.30am – 3.00pm (Friday), contact can be made between 8am - 4.30pm. The centre is closed on Bank Holidays.
- The service will accept referrals from individuals that are aged 18 years and over and whose main residence is located within the geographical boundaries of Blaenau Gwent.
- All Service Users attending the day centre are assessed and reviewed on an annual basis via the care planning process.

## Charges

Blaenau Gwent set their charges in line with Welsh Government guidance.

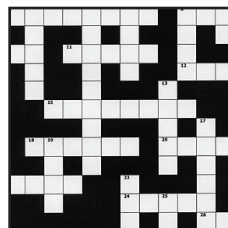
## Activities

- There are a variety of activities on offer at the Joint Day Care Unit and Service Users are supported to participate in whatever activities they choose.
- Service User meetings are held every three months so that activities can be planned where Service Users are encouraged to give their ideas and opinions.



Activities arranged at the day centre include:

- Craft classes provided by staff at the centre and the Education Department.
- Gentle exercise.
- Exercise programmes (GP referrals).
- Regular crosswords and quizzes.
- Sports activities, e.g. bowls, boccia.
- Outings to restaurants and pubs.
- Parties for special events, e.g. Christmas.
- Shopping.
- The centre has close links with the community, with local schools and choirs visiting.
- Pet therapy.
- Container gardening.
- Demonstrations and talks.
- Music therapy and reminiscence through the internet.



## Sources of Assistance

C2BG

The Contact Centre  
Municipal Offices  
Civic Centre  
Ebbw Vale  
NP23 6XB

Tel: (01495) 315700



Joint Day Care Unit  
Abertillery Sports Centre  
Alma Street  
Abertillery  
NP13 1QD

Tel: (01495) 356040

To receive this information in Braille, large print, electronically or on audio tape please contact the Information Officer on (01495) 354630.

Leaflet AS025-4 April 2016  
[www.blaenau-gwent.gov.uk](http://www.blaenau-gwent.gov.uk)